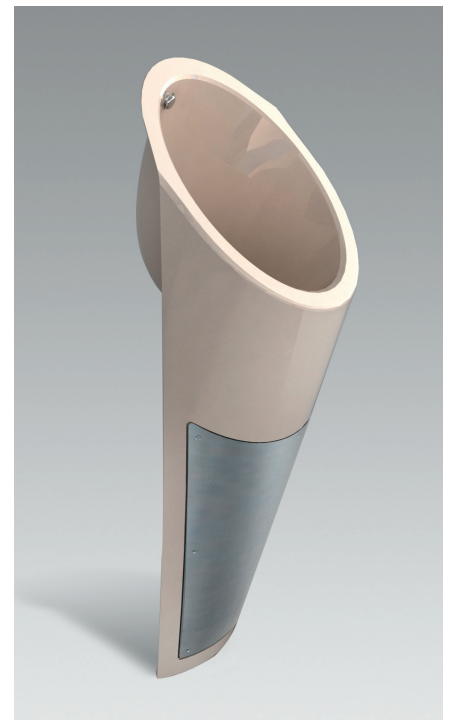
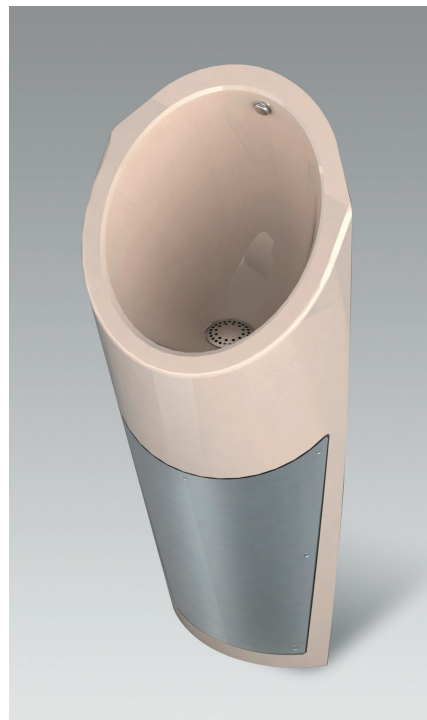




EVAC Urinal

PROPERTIES

- Improvement of passenger comfort
- Reduction of water consumption by approx. 30%
- Increase of train availability by reduced amount of waste water
- Support and improvement of hygienic environment
- Space saving installation



GENERAL DATA

MEASUREMENTS	Dimensions:	900 x 300 x 150 mm
	Weight (shroud):	3kg

MATERIAL	Shroud:	Stainless steel / GRP
-----------------	---------	-----------------------

SYSTEM SUPPLIES	Compressed air:	6 – 7 bar
	Voltage:	24VDC
	Water:	max. 3 bar

CONSUMPTION	Water:	0.11 – 0.2l
--------------------	--------	-------------

REGULATIONS	UIC 563, EN 50155, EN 50128, EN 61373, EN 15085, EN 60529, EN 45545, DIN 5510, NF F 16.101
--------------------	--

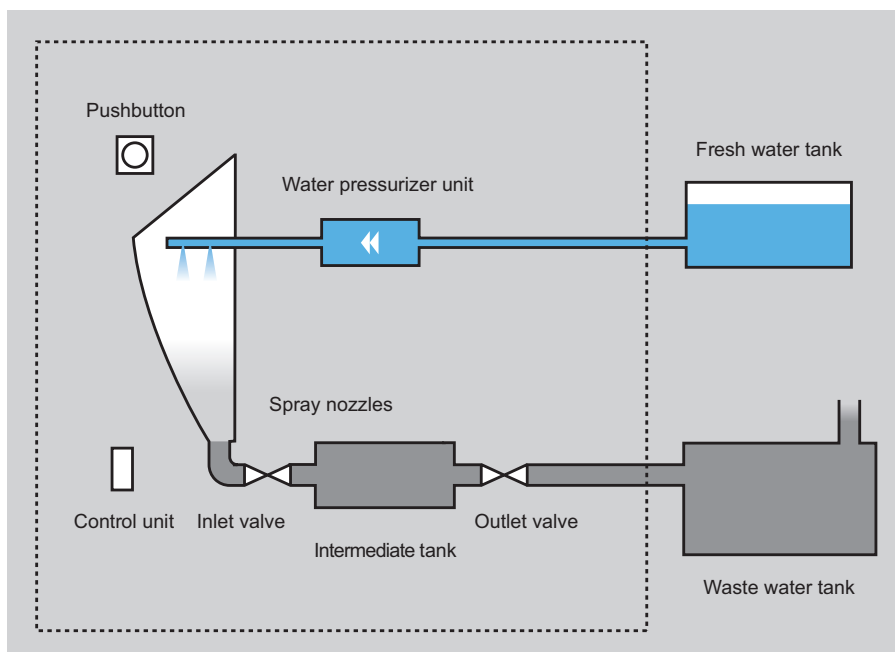




EVAC Urinal

HOW IT WORKS

- The EVAC Urinal is for use in a toilet module – stand alone or in combination with a vacuum toilet.
- It can be operated as a vacuum system or simply by gravity. Designed for easy cleaning without undercuts. It is easy to maintain.
- Its reliability stands out as only tried and tested components are used.



Evac GmbH

Feldstraße 124, 22880 Wedel, Germany

Tel.: +49 4103 9168 0

Fax: +49 4103 9168 90

evac-train@zodiacaerospace.com

www.evac-train.com, www.zodiacaerospace.com